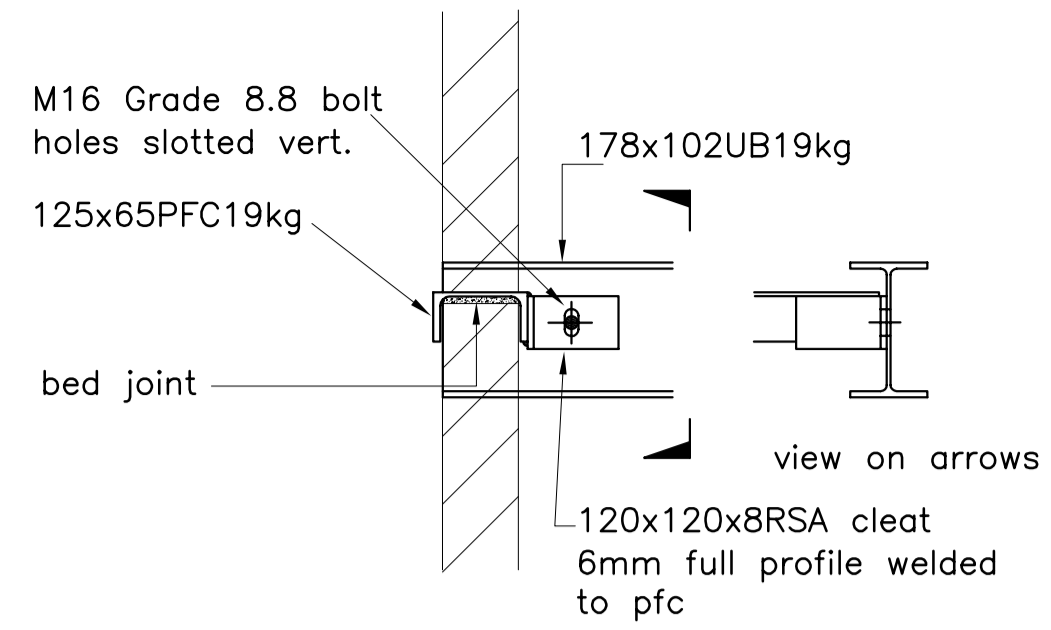
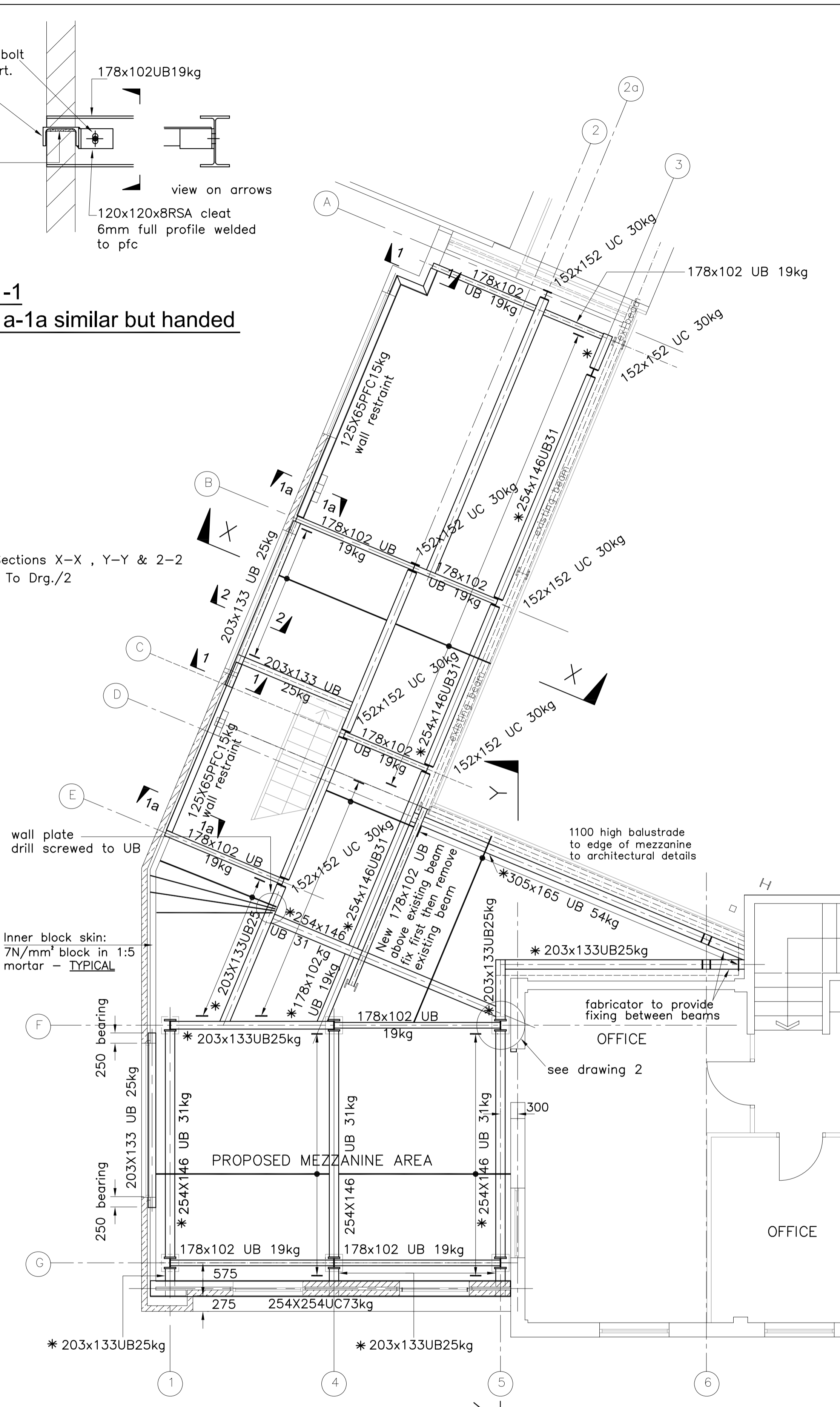


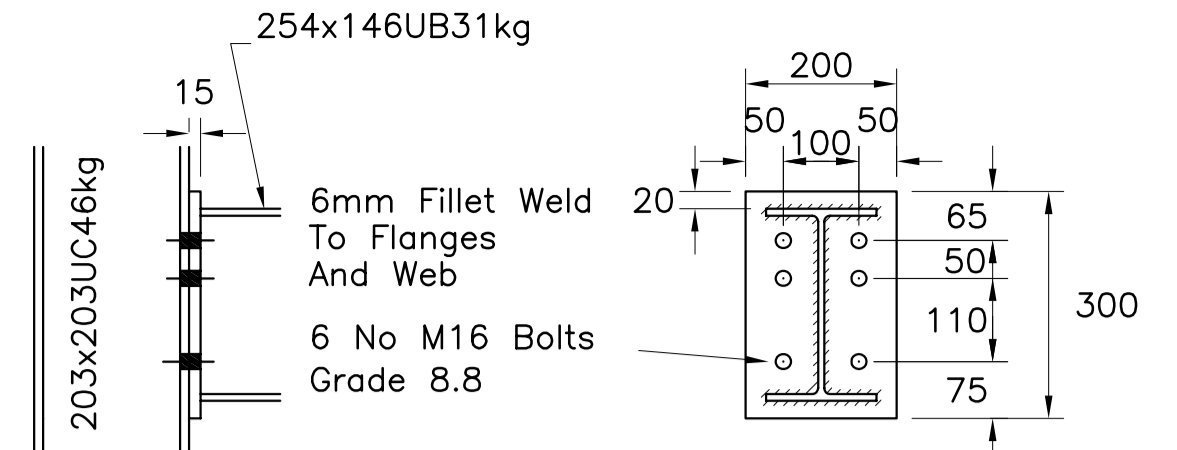
SECTION 1-1
SECTION 1a-1a similar but handed



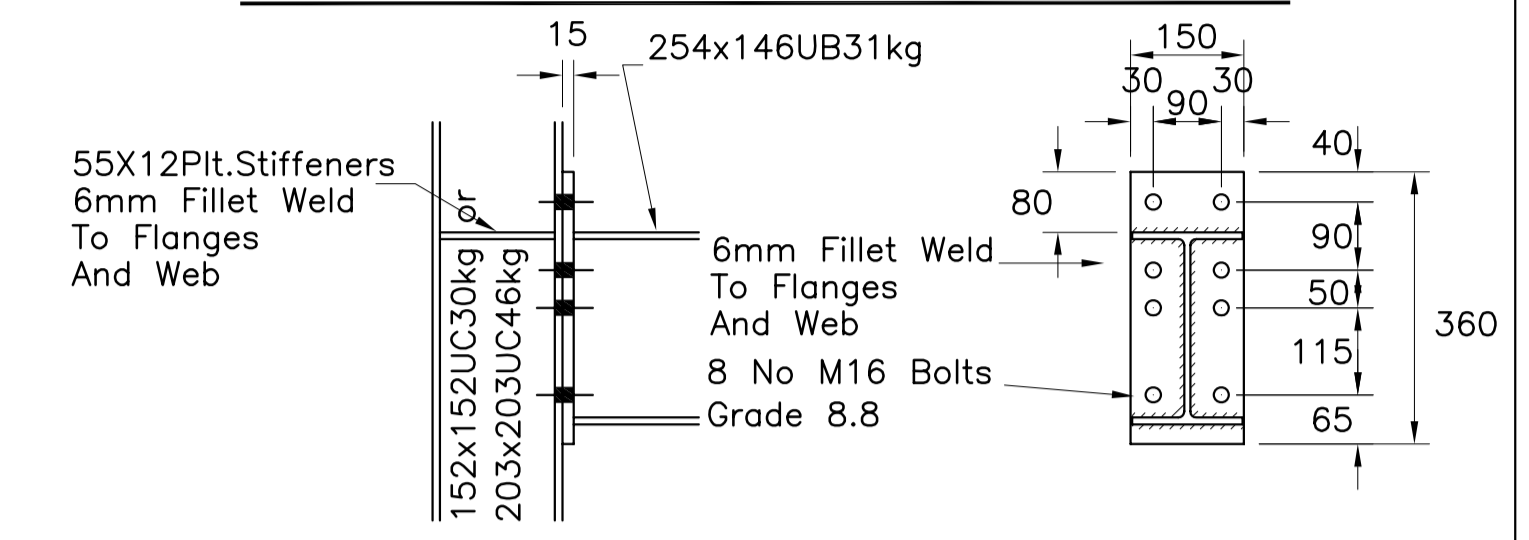
For Sections X-X, Y-Y & 2-2 Refer To Drg./2



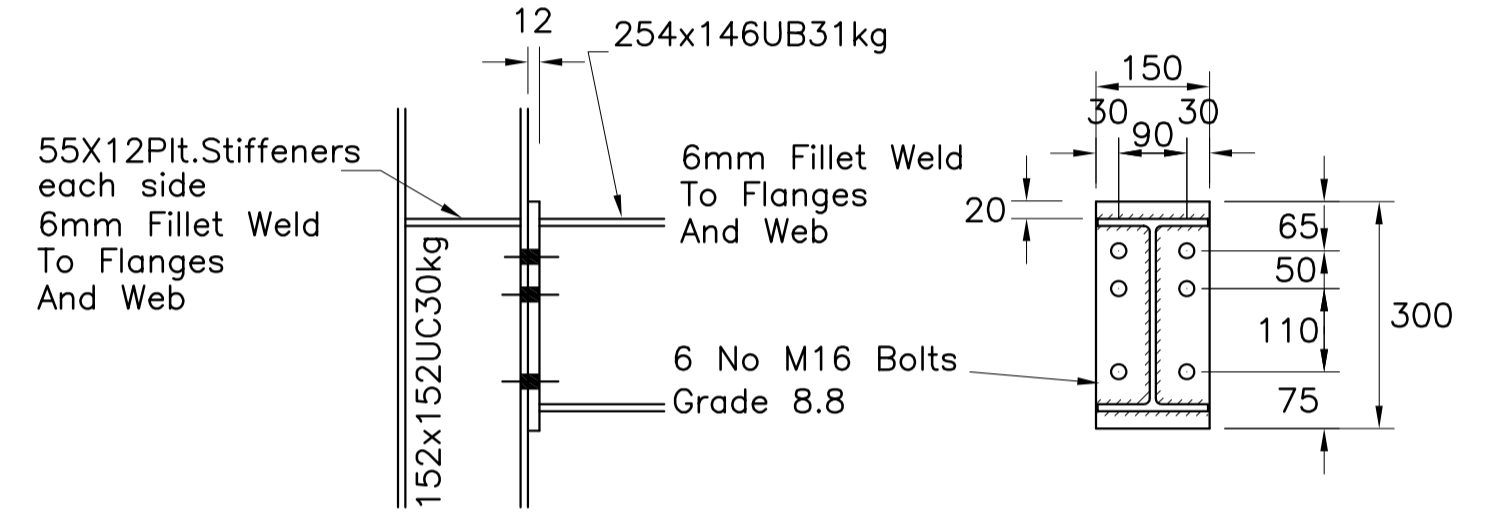
BEAM CONNECTION AT COLUMN g/l's G4 & F4



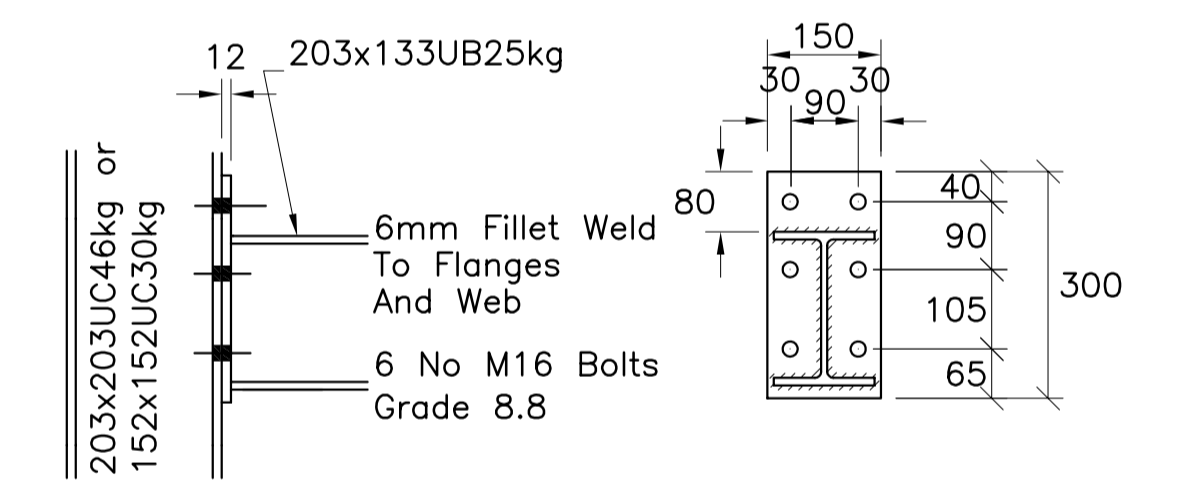
BEAM CONNECTION AT COLUMN G/L's G1, G5, F1, F5, C3-2 side, B3-2 side, & A3-2 side



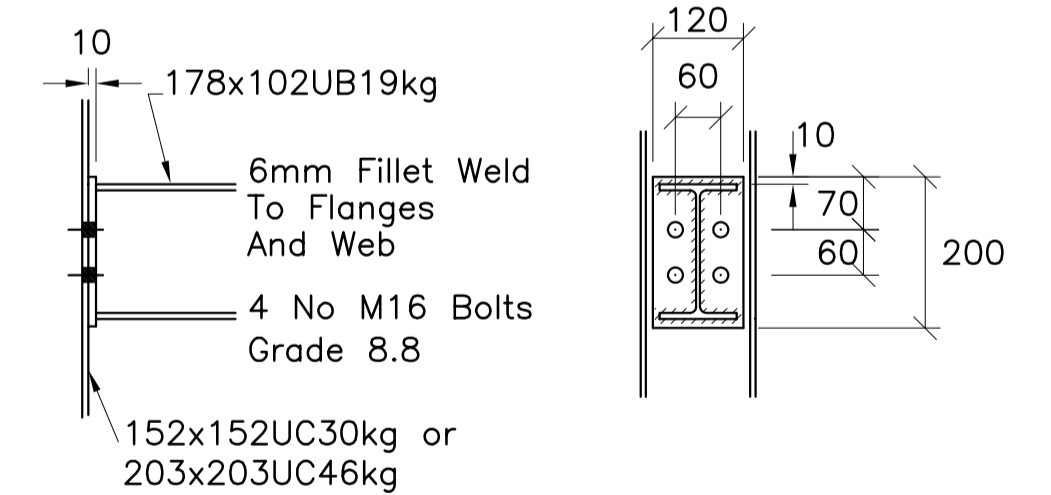
BEAM CONNECTION AT COLUMN G/L's E2, C2-2 side B2 & A2a



BEAM CONNECTION AT COLUMN G/L's E2, F5, G1, G4, G5, F1, & F4



TYPICAL CONNECTION AT 178X102UB'S TO COLUMN WEB



REVISION C - 4/12/02: FOUNDATION DETAILS CLARIFIED
REVISION B - 3/12/02: NOTES ADDED
REVISION A - 22/11/02: DRG UP-DATED

DCS Associates Consulting Structural Engineers

55A High Street, Keynsham, BRISTOL, BS31 1DS
Fax/Answerphone 0117 9866317: Tel: 0117 9861633

DCS Associates

Drawn By	Date	Scale	JOB No.	Drw No.
MSL	04/11/02	1:50 & 1:10	20903	1 C
Project				
Additional Storey Extension Regency Laundry Service Lower Bristol Road Bath				
Title				
Ground & First Floor Plans				

- Notes:**
- 1) Read in conjunction with architectural drawings and drawings 20903/2&/3. H.D. bolts on drg.2
 - 2) All timber to be grade C16 U.N.O.
 - 3) All welds 6mm CFW U.N.O.
 - 4) Bed all steelwork on a 1:3 mortar & pack out around beam ends with block & mortar.
 - 5) Concrete padstones grade C20
 - 6) For the 2 foundation reinforcement details see drawing 20303/3